

SERENE  HOUSE®

www.serenehouse.com

00020161125

SERENE  HOUSE®

操作使用说明书



雾化香薰机
极光 Aurora

CN

Table of Contents

简中 使用说明书 03

极光 雾化香薰机

产品与配件介绍 04 / 使用说明 05 / 灯光模式设定 08 / 时间模式设定 09

清洁保养 10 / 使用注意事项 11 / 安全注意事项 12 / 障碍排除 14 / 产品规格 15

EN Instruction Manual 17

Aurora Aroma Diffuser

Product & Accessories 18 / Operating Instructions 19

Light Setting Instruction 22 / Time Setting Instruction 23

Cleaning & Maintenance 24 / Precautions before use 25

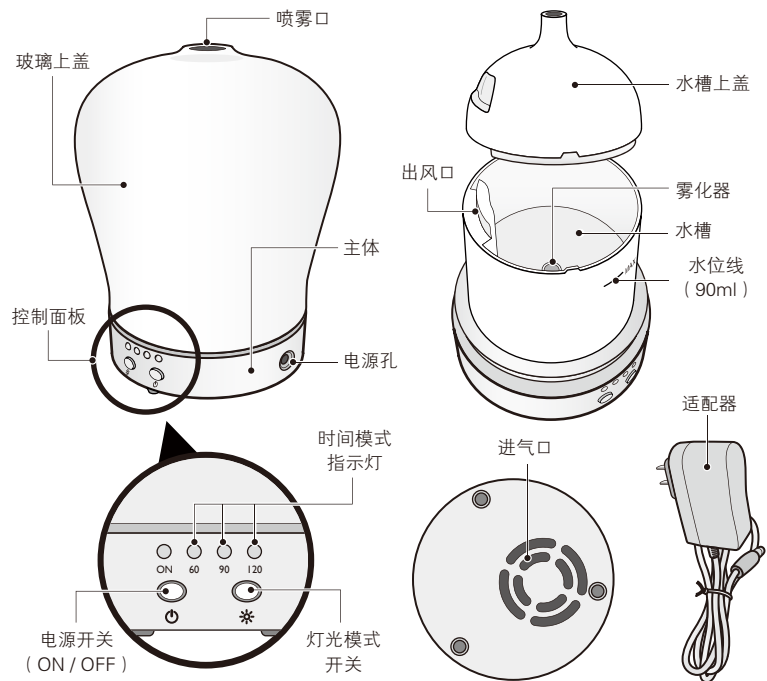
Safety Precautions 26 / Troubleshooting 28 / Specifications 29

**在使用本产品之前，请务必详阅
本使用说明书！**

**仔细阅读说明书后，请保存于可
随时取用之处。**

产品与配件介绍

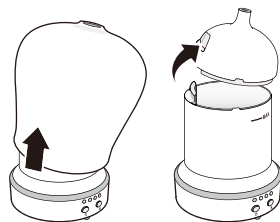
- 使用前，请确认以下物品是否齐全，有无破损情况。



使用说明

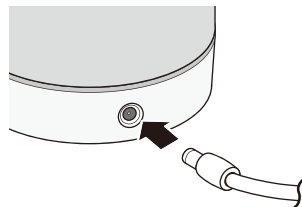
- 请在稳固，平坦，水平的地方使用本产品。
- 若室内环境湿度较高，在使用雾化香熏机时，易在机器周围产生水气。

1



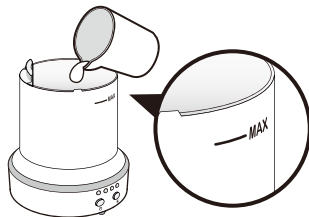
请将玻璃上盖依图示往上取下，再将水槽上盖打开。

2



将适配器接头插入主体上的电源孔。

3

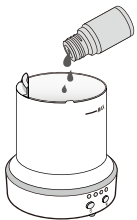


将水缓慢注入水槽，为防止机器受损，请勿超过水位线，并避免让水流入出风口。

- 请务必使用自来水或矿泉水，若使用纯水、蒸馏水或其他液体，将不易产生雾气。
- 请使用温度在 25°C 到 40°C 的水。如使用低于 5°C 的水，香熏机所需启动时间较长，（此为正常情况）。
- 加水步骤完成后，请将水槽外多余的水分擦拭干净。

备注：水质建议

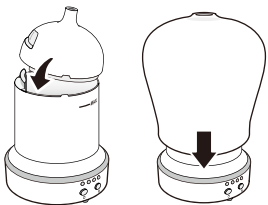
4



将5~10滴（依个人喜好调整）的SERENE HOUSE 100% 天然香薰精油滴入水槽内，再将水槽上盖依定位口方向位置装回。

- 请注意不要让精油滴到水槽外，如不慎滴出水槽，请立即擦拭干净。
- 请务必掀盖后再加入水和精油，切勿从任何风口加入。

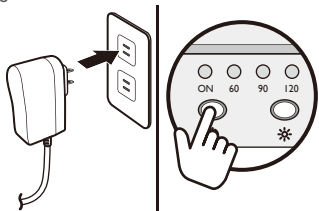
5



请将水槽上盖和玻璃上盖依图示方向装回并且盖紧。

- 请注意水槽上盖安装时有方向性，如未依照图示则无法正确安装。
- 请注意水槽上盖和玻璃上盖未确实盖紧有可能导致无法雾化或雾化效果不佳。

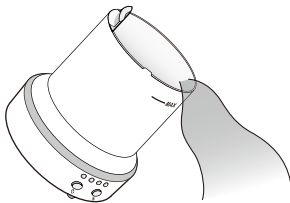
6



先将适配器插入电源插座后，再按下电源开关，电源指示灯与情境灯亮起，机器开始运作。

- 如欲关闭机器，请长按电源开关即可，电源指示灯随之熄灭。
- 使用中如欲关闭情境灯，请长按灯光模式开关即可关闭。
- 基于安全因素，当水量低于安全水位时，香氛雾化机将自动停止断电。

7



再次使用时，如水槽内仍有残余水分，请将水槽内的水倒掉后重复 1~6 步骤（请务必进行定期保养）。

- 正确的操作与保养方式，请按照本说明书「清洁保养」步骤所规定方法实施。

注意

- 请勿在未装玻璃上盖与水槽上盖的情况下将电源接通。
- 运转过程中，请勿取下上盖，或者堵塞主体下方风扇进气口。
- 在机器运转过程中，且水槽内有水时，请勿在电源尚未关闭前打开上盖，或将手放到水槽内，否则有可能造成机器漏水、故障或人员受伤。
- 水槽内残留的水如果超过24小时，请务必倒掉并进行清洁保养步骤。
- 建议使用 SERENE HOUSE 100 % 天然香薰精油，切勿使用含有香水、香精或含杂质的精油，以免伤害雾化器装置。
- 精油若不慎滴到水槽外侧或地板等周围物体上，请立即用布擦拭干净。

备注：水质建议

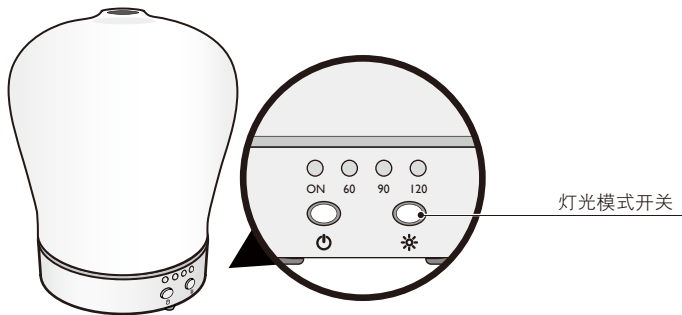
建议使用软水或矿泉水来搭SERENE HOUSE 香氛雾化机。请注意不要使用蒸馏水或纯水，因为水中的矿物质已经被过滤，进而影响机器雾化效果，不易产生雾气。

反渗透(RO)水也只含有微量的矿物质，会造成机器雾化效果不佳，不易产生雾气。

不建议使用硬水。因为硬水中的碳酸钙会沉淀堆积，每次使用后都必须清理震荡器。此外，硬水分子太重，无法有效的产生雾化效果。

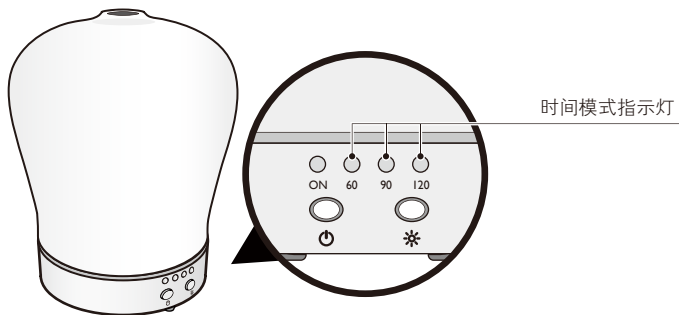
灯光模式设定

1. 按下电源开关，电源指示灯与情境灯亮起。
2. 内建七彩情境灯效果：暖白光、绿光、蓝光、红光、黄光、紫光、白光。
3. 七彩情境灯要切换为单色显示灯，请按压灯光设定钮即可。
4. 使用中如欲关闭情境灯，请长按灯光模式开关，或重覆按压灯光模式开关至七彩情境灯轮替显示完，情境灯即关闭。



时间模式设定

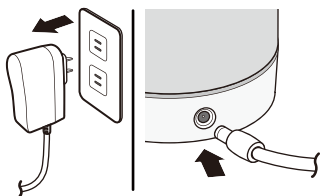
1. 按下电源开关，启动机器连续运作模式（时间模式指示灯未亮）。
2. 按第一下电源开关，60分钟灯号亮起，机器自此运转60分钟后即自动停止运作。
3. 按第二下电源开关，90分钟灯号亮起，机器自此运转90分钟后即自动停止运作。
4. 按第三下电源开关，120分钟灯号亮起，机器自此运转120分钟后即自动停止运作。
5. 按第四下电源开关，机器随即关闭。
 - 机器于时间模式下使用时，如遇水量不足，机器会自动断电。



清洁保养

- 在每次清洁保养前，请务必先将电源拔除。
- 建议每次使用完毕即进行清洁保养，以确保机器正常运作。

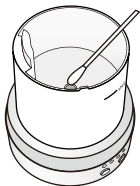
1



请先拔除插座上的适配器，再拔除主体上的适配器接头。

- 为避免水槽内液体流出，移除适配器插头时请保持机体垂直。

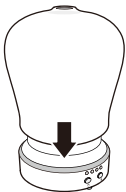
2



取下水槽上盖，倒掉水槽中的水并加入适量温水（水温请勿超过40℃）。

将少许中性清洁剂滴入水槽内，并使用干净棉棒轻拭水槽内部及雾化器表面，待清洗完毕后使用干净的布将机器擦干即可。

3



将上盖装回机器，清洁保养步骤完成。

- 请勿使用酸性清洁剂，否则有可能导致机器损坏。
- 于清洁保养时，请慎防进气口、出风口或按键开关部位进水导致机器故障。若水不慎进入机器本体，请静置至少6小时，待主体内部完全干燥后，方可继续使用。

使用注意事项

- 使用本产品前，请仔细阅读本说明书，安全正确地使用。
- 本产品为雾化香熏机，使用超声波震荡产生芬芳雾气，同时具有LED情境灯光。
- 使用时，请务必阅读本说明书的「使用说明」确保正确操作，若使用方法不当有可能引起故障。
- 保养时，请务必阅读本说明书的「清洁保养」，如保养方法不当，有可能引起故障。
- 本产品是采用超声波雾化原理达到扩香效果，以扩香效果为主，虽未达加湿机标准，但可降低环境干燥度。

香熏精油的使用注意事项

为达到最佳效果，建议使用 SERENE HOUSE 100% 的天然香熏精油；切勿使用含有香水、香精或含杂质的精油，以免伤害雾化器装置。

- 精油属于浓缩的高纯度油，使用时请特别小心。
- 精油有可能溶解塑胶或家具的涂装，请注意不要洒落。
- 幼童与宠物对香味非常敏感，在密闭空间内使用时，请特别小心。
- 如使用期间感觉不舒服或身体不适时，请立即停止使用，并打开窗户使空气流通。
- 请依个人喜好斟酌使用精油用量。
- 如您有任何身体上特殊的状况，例如怀孕、肺衰竭、癌症或癫痫等症状，使用精油前建议请先咨询您的医师。

安全注意事项

为了保障使用安全，请务必遵守以下事项：

- 本使用说明的注意事项，是为了让使用者能安全正确的使用本产品，防止对使用者或他人造成危害及财产损失。
- 警告事项均为有关安全方面的重要内容，请务必遵守。



警告



- 如出现冒烟、异味、杂音等异常现象时，如继续使用可能会导致火灾、触电等，请立即将适配器由电源插座上取下，停止使用。



- 请勿擅自对本产品进行改造、修理或拆解，否则有可能造成火灾、触电、故障或受伤。



- 主体消耗配件废弃时，请依照各国指示废弃。



- 请使用DC24V / 500mA规格之适配器，否则将导致机器故障。
- 当机器运作时，适配器会发热，乃属正常现象。
- 请使用本产品所附的适配器，如使用它牌适配器，有可能会引发机器故障或火灾。
- 于安装时请勿连接适配器，否则有可能造成人员触电或受伤。
- 本产品于长期不使用或移动时，请务必关闭电源并将适配器拔除。请倒掉容器内的水，否则有可能造成产品故障。
- 拔下适配器时，请勿扯住电线，必须牢牢地紧握适配器后再进行拔除，否则有可能造成适配器破损或人员受伤。
- 请慎防精油沾附于产品外侧或家具上，若不慎发生，请立即擦拭，以避免产品外观或家具褪色。



- 清洁保养前，请务必先将产品的电源切断。
- 请勿用沾湿的手操作机器与适配器，或让水与其他液体等沾附、溅洒到上面，以免造成人员触电或受伤。
- 当电源线或插头破损时，请勿使用，否则有可能导致机器短路、故障。
- 当产品摔或落受到撞击造成受损或破裂时，请勿使用，否则有可能导致机器短路、故障。
- 请勿将电源线过度弯折，加热或让重物放置上面，否则有可能引起火灾或故障。
- 请勿故意将眼口鼻靠近出雾口所排出的香氛雾气，否则有可能造成身体不适。
- 请勿让幼童独自使用，要放在幼童触及不到的地方，否则有可能造成伤害，儿童应当受到监督以确保其不会碰触到机器。
- 除非有负责安全的人士给予产品使用的督导和指示，本产品不适合由身体、感官或精神能力欠佳的人士（包括儿童），或缺乏经验及知识的人士使用。
- 请勿放置在以下地方，否则有可能引起火灾、触电、人员受伤或产品故障：
 - * 阳光直射的地方或取暖器具旁边。
 - * 灰塵多的地方。
 - * 倾斜或晃动等不稳的地方。
 - * 瓦斯炉旁或有油埋的地方等。
 - * 环境温度 40° C 以上的地方，并远离火源。
 - * 电器产品（电视机、音箱设备、电冰箱等）的上面或旁边。
- 请勿置放于地毯等柔软的地方，否则会堵塞底部的进气口，造成机器无法正常运作。
- 产品使用过程中，请勿在电源尚未关闭前打开上盖，或将手或异物等放到水槽内，否则有可能造成机器漏水、故障或人员受伤。

障碍排除

当机器疑似故障时，请在委托维修前确认以下事项：

机器无法运作

- 适配器未确实插在插座上
→ 请确认适配器是否正确的安插到插座上。
- 适配器的电源线未正确的接上主体的电源孔
→ 请确认适配器的电源线是否正确的接上主体的电源孔。
- 电源已正确接上，但仍然不会运作
→ 请先确认水槽是否有水，然后再确认电源开关是否开启。或确认是否超过安全水位（MAX），如超出，请将超出水量倒出水槽外。

无法雾化或雾化效果不佳

- 水温太低
→ 请使用温度在25°C到40°C的自来水或矿泉水。
- 使用了纯水或蒸馏水
→ 请使用自来水或矿泉水（某些地区的水质容易造成水垢，请将水过滤后再使用）。
- 雾化器脏污
→ 请依照本说明书的「清洁保养」方法进行保养。
- 机器放置在地毯等柔软物体上，或者使用场所的风量过大
→ 请在水平、平稳及风量小的场所使用。
- 水槽内水位超过水位线上限（MAX）
→ 请将多余的清水倒掉。
- 上盖未确实与主体盖紧
→ 请依照本说明书的「使用说明」步骤重新盖紧上盖。

其它障碍排除请上 www.serenehouse.com.cn 的 Support 专区或请与经销商联系，请勿动手拆解或维修产品。

产品规格

- 扩香效果会因空间通风度、温湿度及空间大小而有所变化。

雾化香熏机 — 极光

型号：	151203001
雾化模式：	超音波震荡
连续使用时间：	≥ 4 小时
建议使用空间：	10 ~ 15 平方公尺
频率（MHz）：	2.4 ± 10%
水槽容量：	90 毫升
灯光颜色：	七彩
电源输入：	DC 24V
消耗功率：	10W
产品尺寸：	直径 11.5 x 高 14.3 公分
产品重量：	260 公克
运作模式：	连续雾化（可定时60 / 90 / 120分钟）
产地：	中国/广东/东莞
附属品：	适配器 / 说明书 / 保证卡

舍宁豪室（上海）贸易有限公司
地址：上海市徐汇区宜山路333号1号楼1605室
电话：400 885 3268/021-61200817
邮箱：service@serenehouse.com.cn



RoHS
compliant



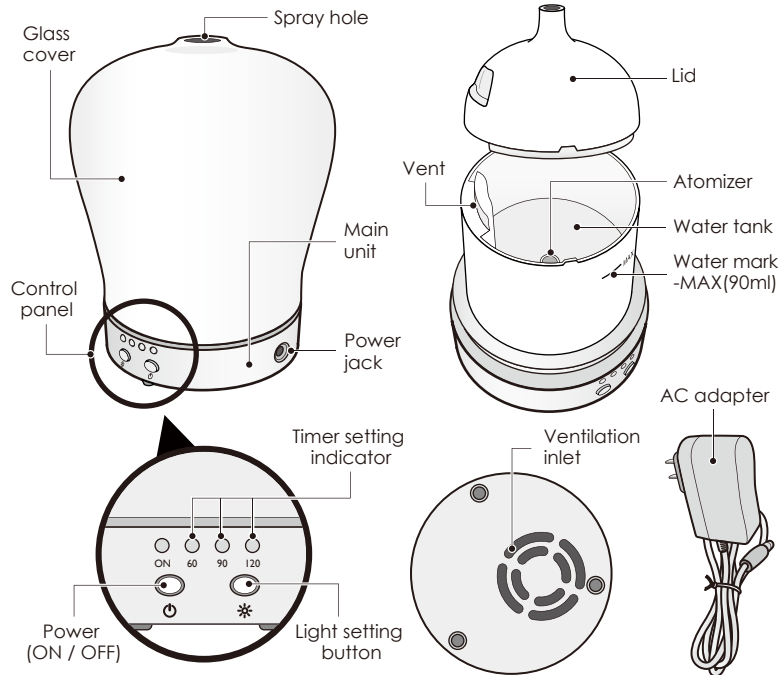
多国专利商品

Please read this manual carefully before using the product.

After reading this manual, please keep it in a readily accessible place.

Product & Accessories

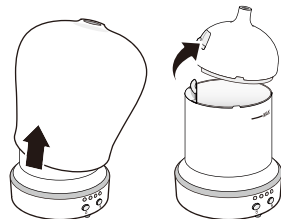
- Please check if all following items are present and if there is any damage before use.



Operating Instructions

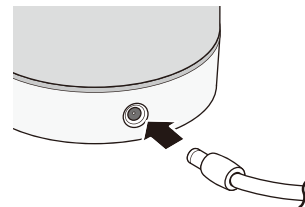
- Always place your Aroma diffuser on a firm, flat and level surface.
- Condensation may occur around the Aroma diffuser when operating in high humidity environment.

1



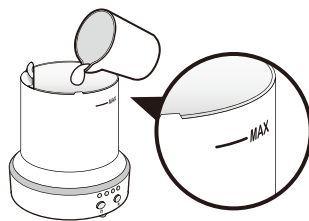
Take off the cover to remove it from the main unit. Remove the lid from water tank.

2



Plug the head of the AC adapter cord into the power jack at the side of the main unit.

3



Fill water tank to or below maximum (MAX) water mark level. To avoid damage to this device, never fill water exceeding its maximum water mark level.

- Fill with water.
- After completing the water filling procedure, please wipe off any excess moisture on the water tank.
- Never add water into the vent hole.

Water Recommendations: Note

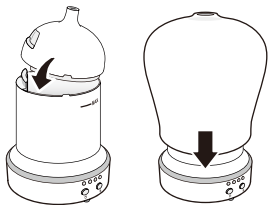
4



Add 5-10 drops of Serene House 100% Essential Oil into the water tank. Cover the tank with lid. Please do not let essential oil drip onto the exterior of Aroma diffuser. If essential oil accidentally drips onto the exterior of the device, wipe clean immediately with a cloth.

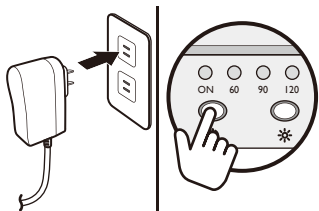
- Never allow water or oil to enter the vent.

5



Put the cover back on main unit.
Place the cover back on the main unit, per diagram. If the lid is not correctly aligned, as a safety feature, the unit will not operate

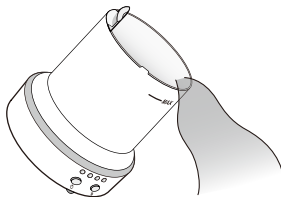
6



Plug AC adapter into a power outlet and press the power button to turn the power on. The built-in LED light and power indicator will be on when the device starts to operate.

- For safety purpose, this Aroma diffuser is programmed to stop operating automatically when it detects the water is below its programmed level.
- To turn off the Aroma diffuser, press the power indicator button for 2 seconds.

7



Please empty the water in the water tank and follow step 1 to 6 when reusing this device.

- For proper handling and maintenance, please refer to the Cleaning & Maintenance section in this manual.

Caution

- Never connect the power without placing the lid and cover on the unit.
- Do not remove the lid or block the ventilation inlet under the main unit during usage.
- When the device is in operation and there is water in water tank, do not touch the atomizer as personal injury or device malfunction may occur.
- After each use, please make sure to pour out any remaining water in tank.
- For best performance, we recommend Serene House 100% pure natural essential oils with this Aroma diffuser. Use of other essential oils may cause damage to the device.
- Make sure to wipe clean with a cloth if oil drips on the main unit or floor.

Water Recommendations: Remark

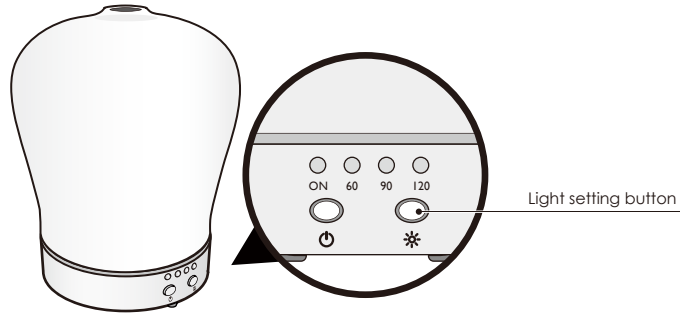
Water Recommendations for Serene House Aroma diffuser
Soft water is best for your Serene House diffuser. You may also use bottled or mineral water. It is important to not use steamed distilled water, as this water had the minerals removed from the water that affects the operation of the diffusers.

Reverse osmosis (RO) water also has less minerals in the water and the diffuser will not be able to diffuse the mist properly and the desired results will not be achieved.

Hard water is also not recommended. This would require that the oscillator be cleaned every time after use when using hard water, because the calcium carbonate from hard water will pile. Also, hard water is too heavy for oscillator to diffuse mist.

Light Setting Instruction

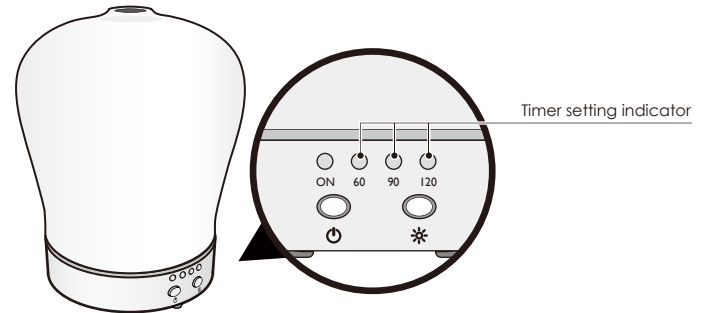
1. To switch on -press the light setting button and the built-in LED light will be on.
2. 7 light color effectiveness - warm white, green, blue, red, yellow, purple and light white.
3. Fix on a single light color - press the light setting button and the light color will be fixed.
4. To switch off the light - keep pressing the light setting button and at the end of 7-light rotating cycle. the light is off.



Time Setting Instruction

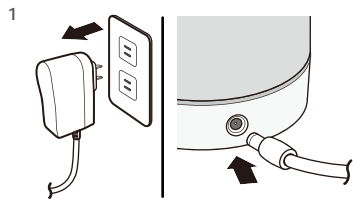
To set usage time of this Aroma diffuser

1. Press the power indicator button for continuous operation.
2. Press the power indicator button once for 60 operation. The 60 indicator will go on.
3. Press the power indicator button twice for 90 operation. The 90 indicator will go on.
4. Press the button 3x for 120 operation.
5. For safety purpose, this Aroma diffuser is programmed to stop operating automatically when it detects the water is below its programmed level.



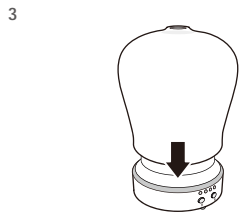
Cleaning & Maintenance

- Always disconnect the AC adapter from the electrical outlet before cleaning.
- For best atomizing performance, be sure to clean the Aroma diffuser after use.

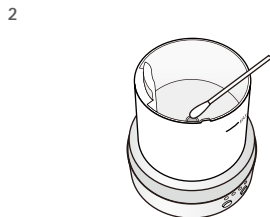


Remove the AC adapter from the electrical outlet and then remove the plug from the main unit.

- To avoid liquid spilling from the water tank, always keep the main unit in an upright position whenever removing AC adapter.



Reattach the lid to complete the cleaning and maintenance procedure.



Remove the lid, empty the water from the tank, add a small amount of warm water (do not exceed 40°C/104°F), and a few drops of neutral cleanser. Use a cotton swab to clean the atomizer and internal surface of the water tank. Gently rinse all the soap out of the water tank after washing.

- Be careful to not allow water to enter the vent.
- Never use acidic cleansers as this may cause malfunction.
- If water accidentally flows into the ventilation inlet, vent or control buttons, please allow internal mechanism to dry thoroughly (at least 6 hours) before the next use, otherwise this may cause the device to malfunction.

Precautions before use

- Please read all instructions before using the product. Use it safely and correctly.
- This product is a vaporized fragrance diffuser and uses ultrasonic vibration technology to generate fragrant vapors, it also has a LED lighting function.
- Read the "Operating Instructions" section of this manual for correct operation; malfunctions may occur due to improper use.
- Make sure to read and follow the "Cleaning & Maintenance" instructions in this manual for cleaning and maintenance; improper maintenance may cause malfunctions.
- This product is manufactured using the ultrasonic atomization principle, and while it does add slight humidity to the air, its primary purpose is as a fragrance diffuser.

Notes on the use of oils

For best performance of this Aroma diffuser, we recommend using Serene House 100% pure and natural essential oil.

- Essential oils are highly concentrated oils. Use with caution.
- Do not spill the oils as they may damage plastic objects and furniture.
- Children and pets are very sensitive to essential oils. Use with caution.
- Stop using the product and open the windows for ventilation if you start to feel uncomfortable.
- Be sure to use appropriate amounts of essential oil.
- If you have any special physical conditions, such as pregnancy, lung failure, cancer, epilepsy or other illnesses, please consult your doctor before using essential oils.

Safety Precautions

For safety, please be sure to comply with following instructions :

- The precautions listed in this manual are to ensure safe and proper use of this product by the user, and to avoid any danger or loss that might occur to the user or others.
- "WARNING" contains important safety instructions. Be sure to follow these instructions.

WARNING



- Stop using the product immediately and unplug the AC adapter once smoke, smell, unusual sounds or other anomalies occur.



- Do not modify, fix, or dismantle this product, as fire, electric shock, or damage may occur.



- When the product is at the end of its life, we recommend disposal at a collection point for the recycling of electrical and electronic equipment, rather than with household waste. The symbols on the product, instruction manual and packaging allow for proper sorting and disposal.



- KEEP OUT OF REACH OF CHILDREN AND PETS
- FOR INDOOR USE ONLY
- Please use a DC 24V / 500 mA adapter, otherwise the device may malfunction.
- The AC adapter will heat up when the product is operating and it is normal.
- Only the included AC adapter may be used with the product, using other AC adapter may result in fire.
- Do not connect the AC adapter to the main unit when installation, as electric shock and injury may occur.
- The product should always be unplugged and the water tank should always be empty when moving the product or when the product is not in operation.
- When unplugging the AC adapter from the outlet, do not pull on the wire. Hold the AC adapter firmly and then unplug it, or else damage or injury may occur.
- Please avoid dripping the essential oil onto the exterior of the product or onto furniture. If essential oil dripping accidentally occurs, wipe off immediately to avoid discoloration of the exterior of the product or the furniture.



- The product must be disconnected from the electrical outlet before use and maintenance.
- Do not handle the main unit and AC adapter with wet hands, or let water or other liquids stick to or spray onto them, as this may result in an electric shock.
- Do not use the product when electric cord or plug is damaged or the product has been accidentally hit, dropped, broken, or damaged in any way.
- Do not use the product when it has been accidentally dropped, hit, or broken as this may cause the product to short-circuit or malfunction.
- Do not bend, heat, or place heavy objects on the power cord as fire or malfunction may occur.
- Do not deliberately place your eyes, nose or mouth close to the fragrance mist emitted as this may cause physical discomfort.
- This product is not a toy. Do not let children use this product. Keep out of reach of children as electric shock and injury may occur. Children should be properly supervised to ensure that they will not play with this product at all times.
- This product is not intended for use by persons (including children) with reduced physical, sensory, or mental capabilities, or lack of experience and knowledge, unless they have been given supervision or instruction concerning use of the product by a person responsible for their safety.
- To avoid fire, electric shock, personal injury or product damage, do not place the product in the areas listed below:
 - * In direct sunlight or next to a heating apparatus.
 - * In dusty places.
 - * On tilted, unstable or uneven surfaces.
 - * Places full of smoke or next to gas stoves.
 - * Places with an ambient temperature of less than 40°C/104°F; keep the product away from sources of ignition.
 - * On top of or next to electrics (TVs, stereos, refrigerators, etc) .
- Do not place the product on soft surfaces such as carpet, otherwise the ventilation inlet at the bottom may be blocked, causing the device to not function correctly.
- Do not remove the lid or put your finger or other objects into the water tank while the product is in operation as water leakage, malfunction or personal injury may occur.

Troubleshooting

If you experience unsatisfactory operations, please follow our troubleshooting guidelines listed below.

Machine does not operate

- Check the adapter
→ Make sure the adapter is fully and correctly plugged into the electrical outlet.
- Power cord not connected to the main unit
→ Be sure plug is inserted into the body socket correctly.
- The power is correctly connected but the device still does not operate
→ Check whether the water tank contains any water and then recheck that the ON/OFF switch is on. Check that the water level in the tank does not exceed the maximum water level line (MAX); if this is the case, empty out the excess water.

The product does not atomize or does not atomize effectively

- Dirty atomizer
→ Perform maintenance according to the 'Cleaning & Maintenance' section of this manual.
- Placement of the product
→ Place on a firm, level, and stable surface.
- Check the water volume
→ Make sure the water does not exceed its designated water mark level.
- The lid does not attach securely to the main unit
→ Reattach the lid according to the procedure in the 'Operating Instructions' section of this manual.
 - See water types/ recommendations above.

Do not attempt to dismantle or repair the product by yourself. If the unit still does not operate satisfactorily, please visit our website www.serenehouse.com.cn and click link "Support", or contact our customer service. Service Hotline: 400 885 3268

Specifications

- Fragrance results may vary depending on ventilation, temperature, humidity, and the size of space.

Aurora

Model code:	151203001
Atomization mode:	Ultrasound
Continuous atomization time:	≥ 4 hr
Suggested room size:	10 ~ 15 m ² (100~150 sq ft)
Ultrasonic frequency(MHz):	2.4 ± 10 %
Water tank capacity:	90ml (2.7fl. oz.)
Colors of light:	Seven colors
Power input:	DC 24V , 10W
Product size:	Ø 11.5 cm x 14.3 cm H
Main unit weight:	≈ 260 g
Operation mode:	Continuous mode
Accessories included:	Adapter / Manual / Warranty card
Design team:	SERENE HOUSE
Made in China	



RoHS
compliant



Patented Product